



Livelihood Enhancements Module

December 2005

Presented by:
Wisteria Information Technologies, LLC
Sterling, VA
(703) 421.1778
<http://www.wisteria-it.com>

Livelihood Enhancements Module

Table of Contents

1	Introduction	3
2	Feature Descriptions	4
2.1	Select “Personal Assignments” as Default Start Page	4
2.2	View Object Permissions	4
3	Module Implementation.....	6
3.1	Install the LL Enhancements Module	6
3.2	Un-Install the LL Enhancements Module	6

Document Revision History

Date	By	Description
December 2005	D. Nalls	Documentation Created

1 Introduction

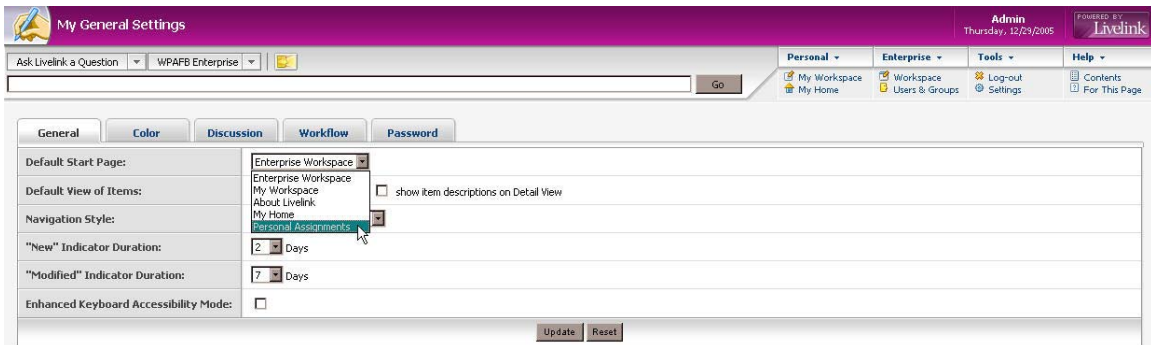
The LL Enhancements Module is a compilation of commonly requested features for the Livelihood Server. Upon module installation, the following new features will be available to Livelihood users:

- “Personal Assignments” may be selected as a default Start Page
- View Object Permissions without “Edit Permissions” privileges

2 Feature Descriptions

2.1 Select “Personal Assignments” as Default Start Page

Each user may now select the “Personal Assignments” page as their default Livelink Start Page. An option will appear under the “Default Start Page” drop-down menu, which is located under Tools→Settings→General tab.



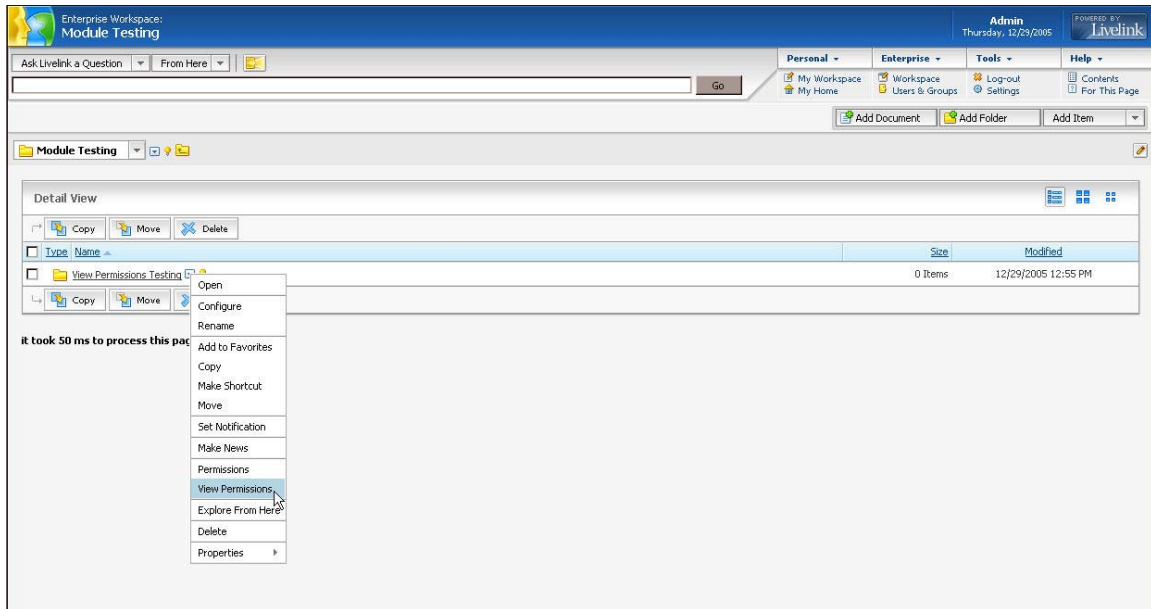
When this option is selected by a user, his/her default start page will be the Livelink “My Assignments” page.

2.2 View Object Permissions

A new Livelink command has been created, which will provide users with See/See Contents permissions on a Livelink item the ability to view the permissions for that item in a read-only format.

A new “View Permissions” option will be displayed on the Livelink Function Menu. When selected, a read-only display of the items permissions will be rendered to the browser page.

Livelink Enhancements Module



Note that the new menu item does not affect the existing “Permissions” command; users with Edit Permissions privileges will see both the “Permissions” and “View Permissions” menu items.

The screenshot shows the 'View Permissions Testing' page in the Livelink Enterprise Workspace. The page displays a table of permissions for various users and groups. The table is divided into two sections: 'Default Access' and 'Assigned Access'. The 'Default Access' section shows permissions for 'Admin', 'DefaultGroup', and 'Public Access'. The 'Assigned Access' section shows permissions for 'development team' and 'Document ID Editors'. The table columns include 'See', 'See Contents', 'Modify', 'Edit Attributes', 'Add Items', 'Delete Versions', 'Delete', 'Reserve', and 'Edit Permissions'. A 'Done' button is located at the bottom of the table.

Default Access									
	See	See Contents	Modify	Edit Attributes	Add Items	Delete Versions	Delete	Reserve	Edit Permissions
Admin	✓	✓	✓	✓	✓	✓	✓	✓	✓
DefaultGroup	✓	✓	✗	✗	✗	✗	✗	✗	✗
Public Access	✓	✗	✗	✗	✗	✗	✗	✗	✗
Assigned Access									
	See	See Contents	Modify	Edit Attributes	Add Items	Delete Versions	Delete	Reserve	Edit Permissions
development team	✓	✓	✓	✓	✓	✗	✗	✗	✗
Document ID Editors	✓	✓	✓	✓	✓	✓	✓	✓	✗

3 Module Implementation

3.1 Install the LL Enhancements Module

The LL Enhancements Module is supported for Livelihood 9.2.x and Livelihood 9.5.x. The module is installed in the same manner as any other Livelihood module:

1. Stop the Livelihood Service
2. Copy the `witllenhance_9_x_x` module into the `<Livelihood Home>/staging` directory
3. Restart the Livelihood Service
4. Log into Livelihood as the Admin user
5. Navigate to the Livelihood Administration page (`?func=admin.index`)
6. Provide the Livelihood Administration password, if prompted
7. Select “Install Modules” under the “Module Administration” section
8. Under the “Installable Modules” section check the box next to “Wisteria LL Enhancements” module
9. Select the “Install” button
10. When prompted, Stop and Restart the Livelihood Service
11. Select the “Continue” hyperlink
12. Verify that the “Wisteria LL Enhancements” module is now listed in the “Installed Modules” section

3.2 Un-Install the LL Enhancements Module

The LL Enhancements module is un-installed in the same manner as any other Livelihood module:

1. Log into Livelihood as the Admin user
2. Navigate to the Livelihood Administration page (`?func=admin.index`)
3. Provide the Livelihood Administration password, if prompted
4. Select “Uninstall Modules” under the “Module Administration” section
5. Under the “Uninstallable Modules” section select the “Uninstall” button next to “Wisteria LL Enhancements” module
6. When prompted, Stop and Restart the Livelihood Service
7. Select the “Continue” hyperlink
8. Verify that the “Wisteria LL Enhancements” module is no longer listed in the “Uninstall Modules” section
9. The module should now be located in the `<Livelihood Home>/staging` directory on the Livelihood server

Livelihood Enhancements Module

WISTERIA IT, LCC OFFICE LOCATIONS

**22012 Box Car Square
Sterling, VA 20166-3039
703.421.1778**

**21774 Dragons Green Square
Ashburn, VA 20147
703.371.9656**